

TOOLBOX PHONICS

British Curriculum-Aligned Phonics through Play

Phase 6A Read Activity

© Toolbox Phonics Ltd. All rights reserved.

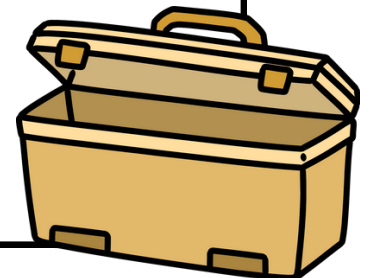
All content in this document is the original intellectual property of Toolbox Phonics Ltd.

No part of this resource may be copied, modified, shared, or distributed in any form without written permission from the publisher.

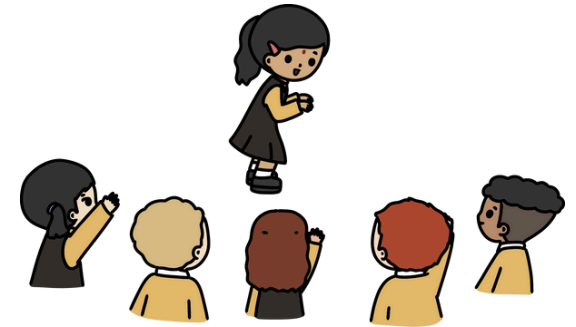
For personal teaching, tutoring, or classroom use only.

Commercial use, resale, or redistribution is strictly prohibited.

www.toolboxphonics.com



Mime Time



How to Play

- 1 Place the word cards into a gift bag or box.
- 2 Have the children sit in a circle and invite a volunteer to step into the middle.
- 3 The volunteer then secretly takes a word card from the bag, reads it, and places it face down.
- 4 They act out the word using only mime actions (no talking), while the other children try to guess what it is.
- 5 After each round, reiterate the **root word** and explain how the '**un**' prefix changes its meaning to 'not' or 'the opposite of'.

Playing with One Child

Play in the same way, taking turns with the child to read and act out the words.

Toolbox Items:

You can substitute these items with similar ones



bag

untie

TOOLBOX PHONICS

unfit

TOOLBOX PHONICS

unlock

TOOLBOX PHONICS

unfold

TOOLBOX PHONICS

unwell

TOOLBOX PHONICS

unkind

TOOLBOX PHONICS

unpack

TOOLBOX PHONICS

unzip

TOOLBOX PHONICS

unhappy

TOOLBOX PHONICS

unload

TOOLBOX PHONICS

undress

TOOLBOX PHONICS

unwrap

TOOLBOX PHONICS