

TOOLBOX PHONICS

British Curriculum-Aligned Phonics through Play

Phase 5 'Best Bet Men' Flashcards

© Toolbox Phonics Ltd. All rights reserved.

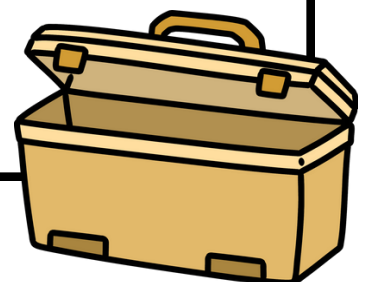
All content in this document is the original intellectual property of Toolbox Phonics Ltd.

No part of this resource may be copied, modified, shared, or distributed in any form without written permission from the publisher.

For personal teaching, tutoring, or classroom use only.

Commercial use, resale, or redistribution is strictly prohibited.

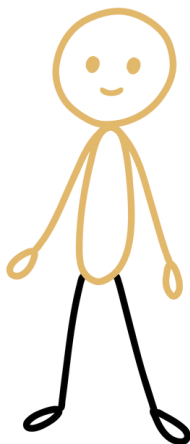
www.toolboxphonics.com



Phase 5 Best Bet Men Flashcards

ai

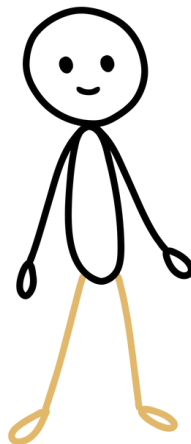
I am usually at the beginning or in the middle of a syllable.



TOOLBOX PHONICS

ay

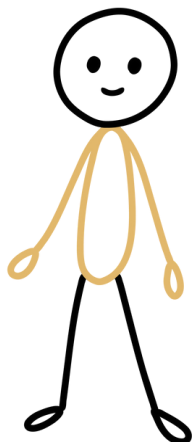
I am usually at the end of a syllable or word.



TOOLBOX PHONICS

a-e

I am in the middle of the final syllable and usually come before a 't', 'k', or 'p' sound.



TOOLBOX PHONICS